

## MSD OF MARTINSVILLE MEAL CHARGE POLICY

### K-8 ONLY

Each student will be allowed a maximum of (5) lunch charges.

After the (5) lunch charge maximum has been reached students will be given an alternative meal of a peanut butter and jelly or cheese sandwich and milk.

Low balance notices will be sent home (3) days per week, i.e. all accounts with a POSITIVE \$5.00 or LESS. Negative balance notices will be sent home each day, i.e. all accounts with an amount LESS THAN \$0.00.

Students will not be allowed to charge breakfast and no alternative meal will be provided.

Students at the middle school will be required to fill out a CHARGE slip when they do not have funds to pay for their lunch. Once they have filled out (5) slips they will receive the alternative meal.

Cafeteria Managers will keep a roster of those who have charged (5) meals and serve those students the alternative meal.

Students who bring funds for the day's meal but have (5) lunch charges on record will receive the menu being served for that day.

Cafeteria Manager's will inform the Food Service Office if one student receives the alternate meal for (5) consecutive days.

Should a student receive this meal for (5) consecutive days, the Food Service Office will contact the parents via either phone or mail. If necessary we will ask the Family Service Coordinators for help.

The alternate meals will show up on each student's meal statement, with no charge amount attached. This is for parent notification and record keeping purposes only.

The current policy of no charging of ala carte items will remain in effect.

Students will not be allowed to purchase ala carte and then charge a meal.

These procedures will be in effect for students in grades K-8 only.

The current policy of no charges allowed at Martinsville High School will remain in effect.

*In accordance with federal law and U.S. Department of Agriculture policy, this institution is prohibited from discriminating on the basis of race, color, national origin, sex, age, or disability. (Not all prohibited bases apply to all programs.) To file a complaint, write USDA,*

*Director, Office of Civil Rights, Room 326-W, Whitten Building, 1400 Independence Avenue, SW, Washington, D.C. 20250-9410*

#### MSD of Martinsville

#### Food Service Department

909 South Main St.

Martinsville, IN 46151

Phone: 765/349-4452 Fax: 765/349-4453

<http://msdadmin.scican.net/foodservice>

#### Kurt A. Bodell, Food Service Director

Shelly Creighton, Support Specialist

Carolyn Realey, Secretary-Bookkeeper

Jim Bennett, Courier

#### Food Service Managers

Brooklyn Elementary, Becky Stroud

Centerton Elementary, Mary Ellen Coomer

Central Elementary, Jackie Rogers

Green Township Elementary, Tina Dunning

Paragon Elementary, Kim Walls

Poston Road Elementary, Kim Craig

Smith Elementary, Nola Hughey

South Elementary, Rita Laymon

East Middle School, Leighanna Trisler

West Middle School, Phyllis Pemberton

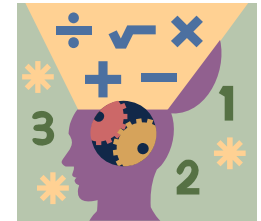
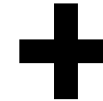
Martinsville High School, Donna Magness

## Metropolitan School District of Martinsville

### School Food Services

2008-2009

# HEALTHY MEALS MAKE HEALTHY MINDS



**School meals.  
Feeding the body  
and the mind,  
one student at a time.**

The MSD of Martinsville Food Service Department operates the National School Lunch and Breakfast Programs. These programs were created by the United States Congress to provide students with nutritious and affordable meals.



## NATIONAL SCHOOL LUNCH AND BREAKFAST PROGRAMS

The MSD of Martinsville school menus are created using the Additional Menu Planning Approach. This is a version of the Traditional Food-Based Menu Planning System. All meals meet or exceed the minimum USDA requirements.

USDA guidelines require school meals to average no more than 30 percent calories from fat and no more than 10 percent calories from saturated fat in a one week period. Additionally lunches must provide, over an average week, at least 1/3 of the daily Recommended Dietary Allowances of protein, iron, calcium and vitamins A and C. Breakfast menus must provide, over an average week, at least 1/4 of the daily Recommended Daily Allowances of protein, iron, calcium and vitamins A and C.

Some foods are provided for the school lunch and breakfast programs through the USDA commodity program. High quality, government donated commodities are used in school meals. Items such as cheese, beans, ground beef, turkey, chicken, fruits, vegetables and other foods declared surplus by the USDA are available to schools in a limited supply throughout the school year. Commodities provided are based on availability.



### Lunch Meal Pattern

Amount Per Serving:

#### Minimum Quantity

Elementary	
Meat/Meat Alternate	2 oz.
Vegetable and/or Fruit	3/4 cup
Bread/Grains	8 servings per week
Milk	8 oz.
Middle/High	
Meat/Meat Alternate	2 oz.
Vegetable and/or Fruit	3/4 cup
Bread/Grains	10 servings per week
Milk	8 oz.

### Breakfast Meal Pattern

Amount Per Serving:

#### All Students

- ◆ 8 oz. Milk
- ◆ 1/2 cup fruit, (fresh or canned fruit or 100% fruit juice) or vegetable
- ◆ One of the following options
  - Two servings of bread/grains
  - Two servings of meat/meat alternate
  - One serving of bread/grains and one
  - Serving of meat/meat alternate



### “OFFER VS. SERVE”

Offer vs. Serve is a state recommended program that gives students more food choices and helps control waste in the school lunch and breakfast programs. There are five meal components offered at lunch: Meat/Meat Alternate, Bread/Grains, Fruit, Vegetable and Milk. Students in the MSD of Martinsville are required to choose (1) entrée and at least (2) additional components for lunch. Milk is considered an acceptable component choice. At breakfast students must choose (1) entrée and (1) additional component, as with lunch, milk is an acceptable choice.



### A LA CARTE

A la carte items may be available daily at each school. Students may purchase food and beverages that are not included with their meal. We offer a variety of a la carte items, ( selections vary by school), for purchase during meal periods: individual portions of items on the menu, water, juice, sports drinks, juice bars, juice slushes, milk, and low fat snacks. Prices vary from \$.25-\$1.75.

## DAILY LUNCH CHOICES

### Elementary

Entrée:	2 choices
Fruits and Vegetables:	2-4 choices
Bread/Grain:	1 choice
Milk:	4 varieties, 1% white and 1% chocolate, strawberry or vanilla

### Middle School

Entrée:	3 choices
Fruits and Vegetables:	2-4 choices
Bread/Grain:	1 choice
Milk:	4 varieties, 1% white and 1% chocolate, strawberry or vanilla

### High School - (7) Meal Stations

Chef's Special's Plus:	Cheeseburgers, Tacos, various favorites, such as Chili
South of the Border:	Tacos, Nachos, Fajitas, Burritos, and other Mexican dishes
Little Italy:	Pizza and Pasta
Chicken and the Sea:	Chicken nuggets, Various Chicken dishes, Fish and Shrimp
Fresh and Lite:	Serve yourself Salad Bar, Made to order Deli Bar Tues– Asian Bar, Thurs-Potato Bar, Fri-Pasta Bar
Grab-n-Go:	Serve yourself. Various entrees and sides
The Well:	Meal outlet in the High School commons area. Several Entrees, sides and a la carte items.

### 2009-2010 MEAL PRICES

Students	<u>Breakfast</u>	<u>Lunch</u>
Elementary	\$1.25	\$2.00
Middle/High	\$1.25	\$2.25
Reduced Price Meals	\$.30	\$.40
<b>Adults</b>	\$1.50	\$2.75
Milk	\$.40	\$.40

**Make payments online:** log onto Family Access and click Online Payment

### FREE AND REDUCED PRICED MEALS

Free and reduced priced meals are available to students who qualify. To apply for free or reduced price meals you must submit a **completed** application for approval. Families may apply at anytime during the school year. Applications are valid for the school year in which they were approved. Families who were approved in the previous school year have (30) days from the first day of the new school year to submit an application for the current school year. If a new application is not approved within this (30) day period the family will be removed from the program until an application for the current school year has been approved. Applications are available at each school or from the Food Service office at 765/349-4452.